



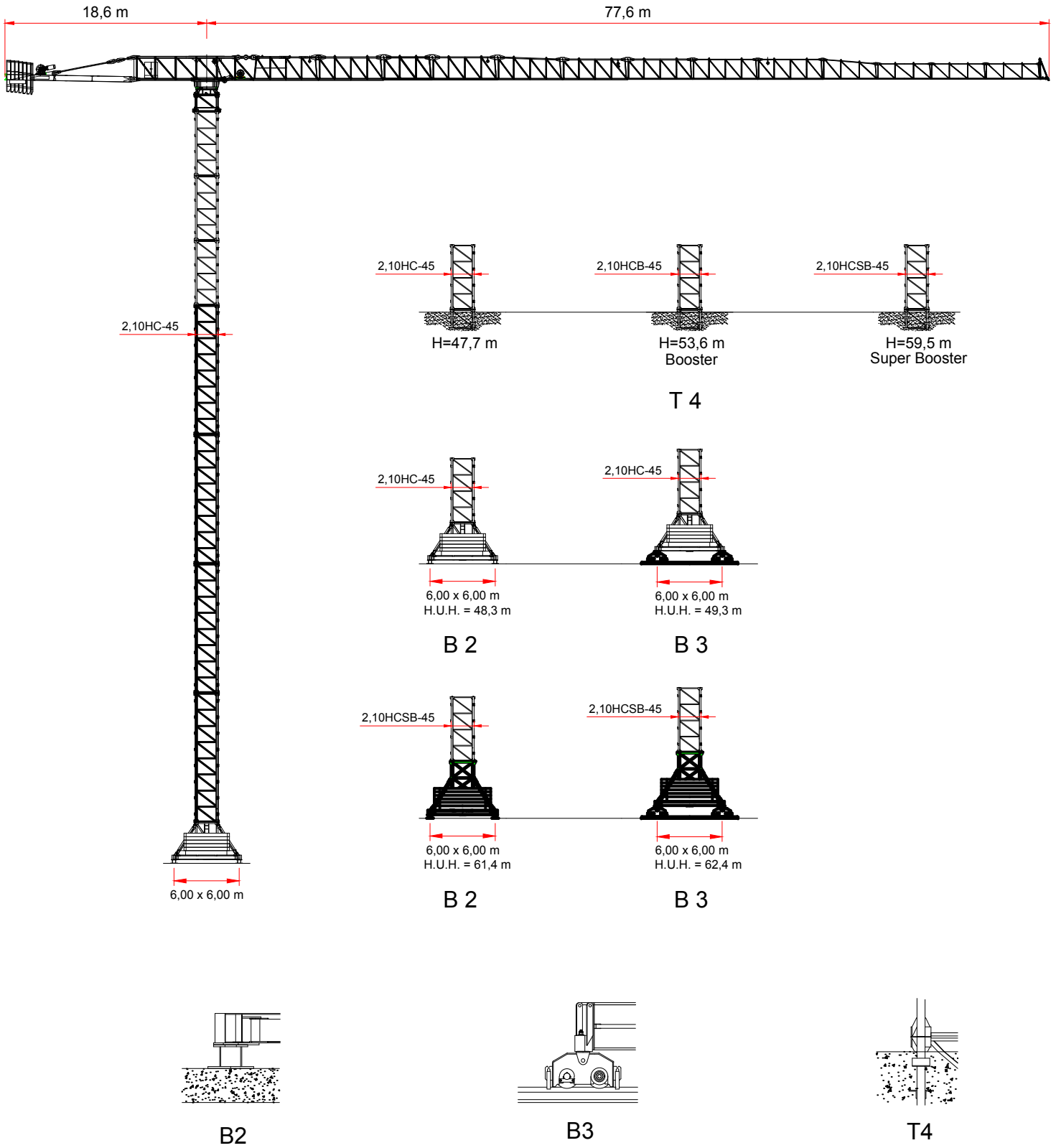
# *GRT 7527*

*16t*

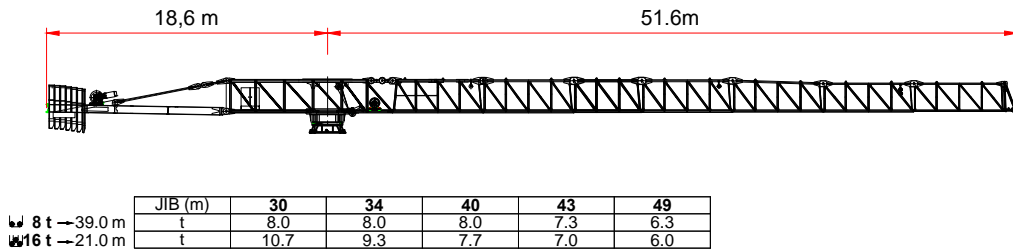
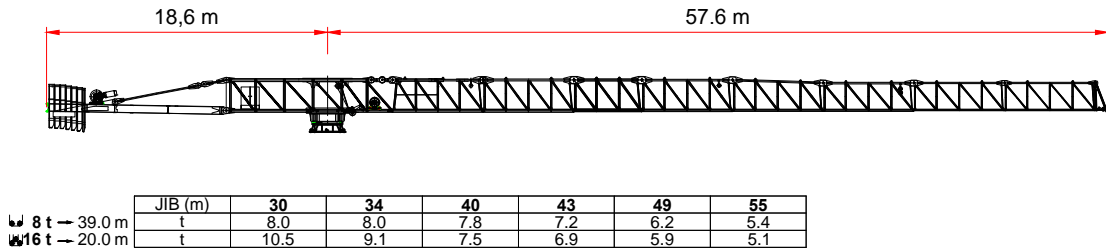
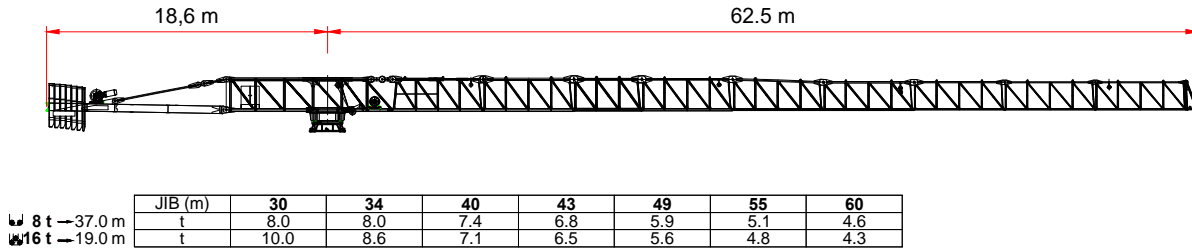
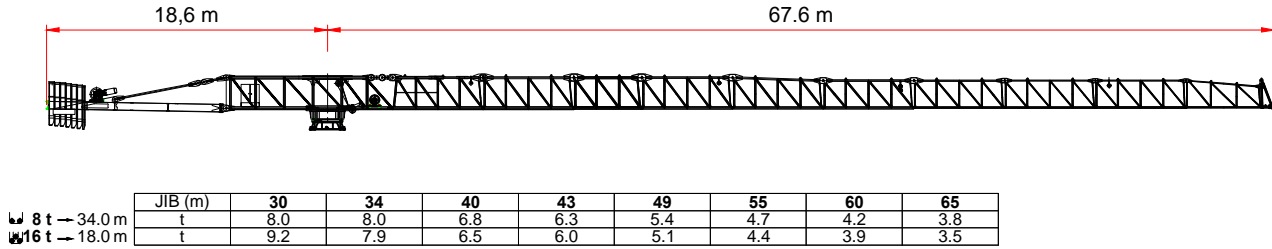
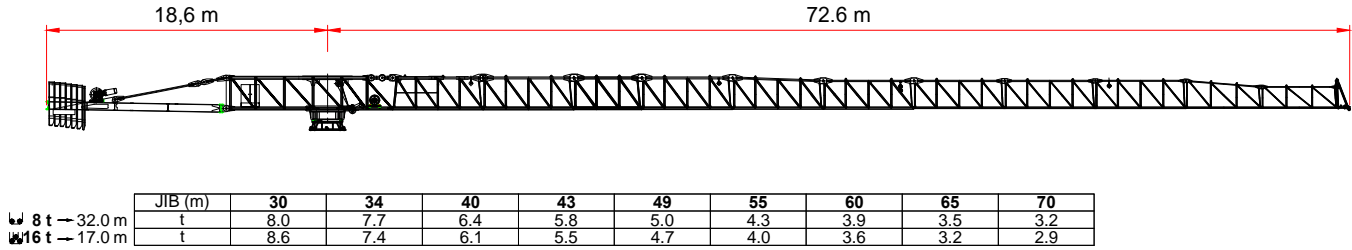
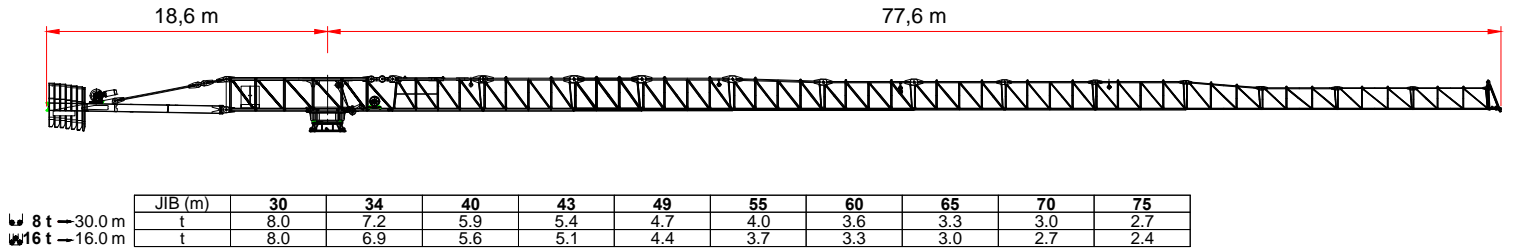
**EN 14439-FEM 1001- C25 / D25-A4**

TEKNIK KATALOG  
TECHNICAL DATASHEET  
SCHEMA TECNICA  
FICHE TECHNIQUE  
TECHNISCHE SPEZIFIKATIONEN

Gergisiz Kule Vinç - Gru senza cuspidi - Flat Top Crane - Grues sans poinçon - Kran ohne turmspitze

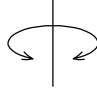
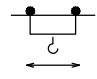


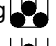



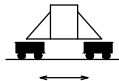


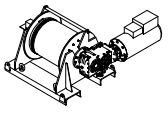


# YÜK DİYAGRAMI - DIAGRAMMI DI PORTATA - LOAD CHART - DIAGRAMME DE CHARGE UTILE - BELASTBEREITSDIAGRAMM

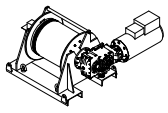




# TEMEL ÖZELLİKLER - CARATTERISTICHE AZIONAMENTI PRINCIPALI - MAIN DRIVE FEATURES

## CARACTÉRISTIQUE ACTIONNEMENTS PRINCIPAUX - HAUPTBEDIENUNGSEIGENSCHAFTEN

		Hız - Velocità - Speed - Vitesse - Geschwindigkeit	Güç - Potenza - Power - Puissance - Leistung
Dönüş Rotazione Slewing Orientation Schwenken		0 → 0,70 r.p.m.	2 x 80 Nm
Şaryo Carrello Trolley Chariot Katzfahnen		1. vites 12000 kg  6000kg  11 m/min 2. vites 12000 kg  6000kg  48 m/min 3. vites 6000 kg  3000kg  82 m/min	1 x 5,5 KW
Yürüyüş Traslazione Rail Translation Kranfahren		2,72 m/min (10Hz)	4 x 4,0 KW

Tip Type Tipo Type Type		Güç - Power - Potenza Puissance - Leistung		Halat - Rope - Fune Cable - Seil	
		hp - CV PS - ch	kW	m	
50-VF1035		61	45	600	
Katman - Layer - Strati Couches - Lagen		N. 9			
Vites - Step - Marcia Vitesse - Gang		kg	m/min	kg	m/min
1		6000	6,9	12000	3,5
2		6000	34,9	12000	17,5
3		3000	55,9	6000	28,0
4		1600	76,7	3200	38,4
Maksimum Yükseklik - Maximum height - Massima altezza - Hauteur maximale - Maximale Höhe		213 m			105 m

Tip Type Tipo Type Type		Güç - Power - Potenza Puissance - Leistung		Halat - Rope - Fune Cable - Seil	
		hp - CV PS - ch	kW	m	
50-VF1035		75	55	800	
Katman - Layer - Strati Couches - Lagen		N. 9			
Vites - Step - Marcia Vitesse - Gang		kg	m/min	kg	m/min
1		6000	7,3	12000	3,7
2		6000	36,7	12000	18,4
3		3000	58,7	6000	29,4
4		1600	80,3	3200	40,2
Maksimum Yükseklik - Maximum height - Massima altezza - Hauteur maximale - Maximale Höhe		303 m			147 m

Sevkiyat Listesi - Distinta di Carico - Packing List - Liste de Colisage - Kolli Liste

No. Pos. Item	Parça Pezzi Pieces	Açıklama Description	Çizim Sketch	Boyutlar Dimensions			Ağırlık Weight (Kg)		
				L	W	H	Unit.	Total.	
1	1	Bom Elementi di freccia Jib element Elément de flèche Elemente von Arm	Nº2		6,515	1,600	2,340	3600	-
	1		Nº3		6,530	1,600	2,340	2670	-
	1		Nº4		5,030	1,600	2,300	1700	-
	1		Nº5		6,510	1,600	2,300	1810	-
	1		Nº6		6,480	1,600	2,265	1670	-
	1		Nº7		6,455	1,600	2,045	1465	-
	1		Nº8		6,415	1,600	2,005	1100	-
	1		Nº9		6,355	1,600	1,965	900	-
	1		Nº10		6,325	1,600	1,945	780	-
	1		Nº11		5,325	1,600	1,935	510	-
	1		Nº12		5,305	1,600	1,505	430	-
	1		Nº13		5,295	1,600	1,495	340	-
	1		Nº14		5,295	1,600	1,495	340	-
	1		Bom ucu aparatı Puntale Jib point Elément de pointe		0,940	1,600	2,050	165	-
	Bom Freccia Jib Flèche Ausleger				75 m.	73,60	1,600	2,340	-
70 m.					68,60	1,600	2,340	-	17140
65 m.					63,60	1,600	2,340	-	16800
60 m.					58,60	1,600	2,340	-	16370
55 m.					53,60	1,600	2,340	-	15860
43 m.					41,60	1,600	2,340	-	14180
Bom uzunluğu / Lunghezza freccia / Jib length / Longeur Flèche / Länge Ausleger									
2	1	Saryo motorlu "T" kuyruk kesiti Elemento controfreccia "T" porta argano carrello "T" Counterjib section with trolley winch Contreflèche porte treuil Gegenflock-Abschnitt mit Karren-Winde		11,200	1,600	2,346	7100	-	
3	1	Kanca motorlu kuyruk kesiti Elemento controfreccia porta argano sollevamento Counterjib section with hoisting winch Contreflèche porte treuil Gegenauslegerteil mit Hubgewinde		12,000	3,500	1,800	7000	-	
4	2	Bom bağlantı kolu / Tiranti freccia Jib connecting rods / Zugstangen arms	"BF"	1,110	0,170	0,400	151	302	
	"BT"		1,110	0,110	0,400	150	300		
	2	Kuyruk bağlantı kolu Tiranti controfreccia Counterjib connecting rods Tirants de contreflèche Gegenauslegerteil arms	"TC"	5,803	0,160	0,380	435	870	
	2		"BC"	0,880	0,050	0,380	112	224	
	1		"FC"	2,070	1,760	0,380	478	-	
5	1	Döner tabla Gruppo rotazione Slewing table Table tournante Drehgruppe		2,350	2,600	2,000	7800	-	

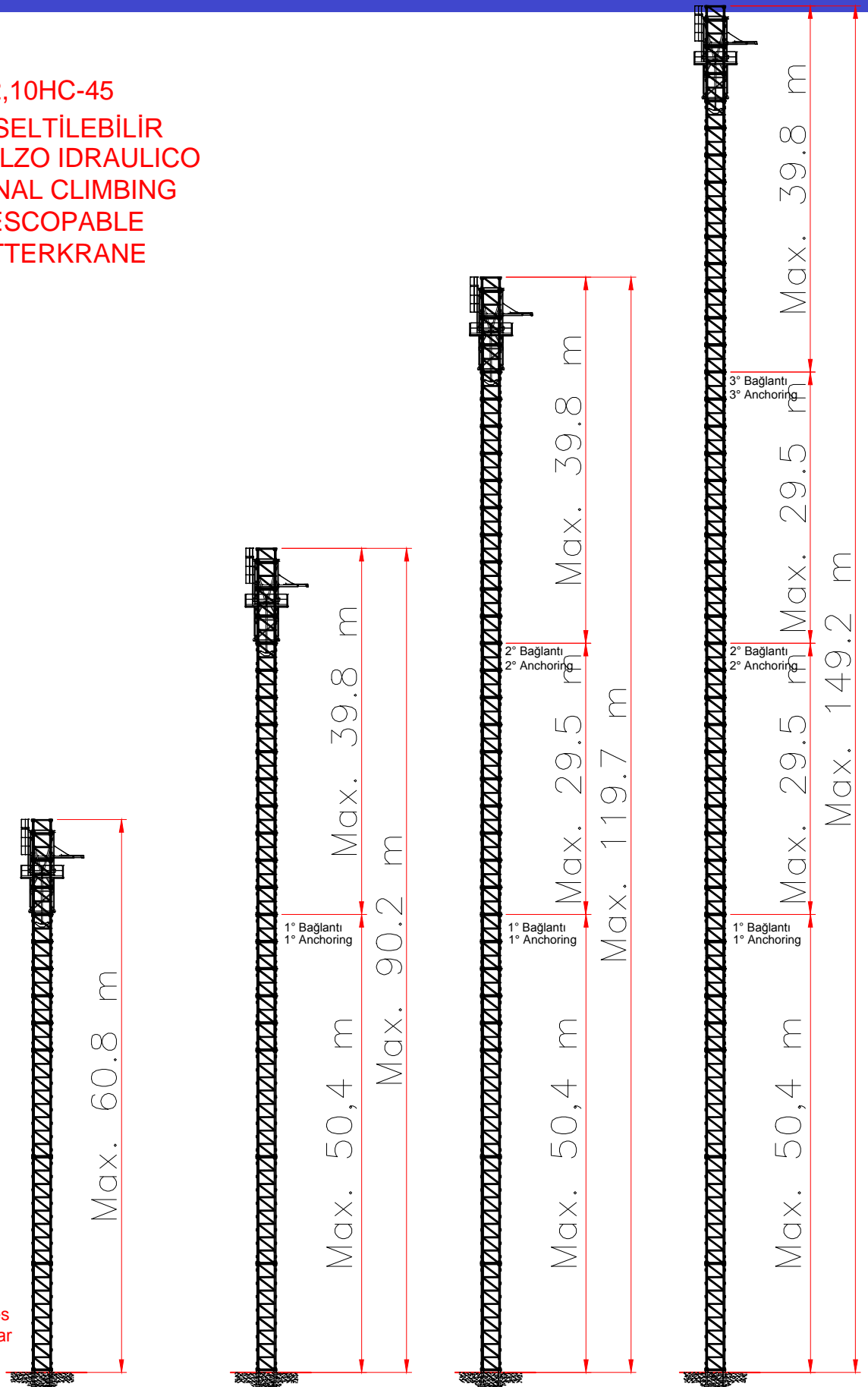
Sevkiyat Listesi - Distinta di Carico - Packing List - Liste de Colisage - Kolli Liste

No. Pos. Item	Parça Pezzi Pieces	Açıklama Description	Çizim Sketch	Boyut Dimensions			Ağırlık Weight (Kg)		
				L	W	H	Unit.	Total.	
6	1	Şaryo / Carrello braccio Hoisting block / Poulie de soulèvement Ankerblock von Heben		1,700	1,850	1,100	780	-	
7	1	Kanca / Bozzello sollevamento Hoisting block / Poulie de soulèvement Ankerblock von Heben		"T2"	1,275	0,330	1,155	380	
	1			"T4"	0,730	0,230	0,991	176	
8	1	Kabin Ballatoio cabina, cabina Access balcony, cabin Porte cabine Wartung platform		3,100	2,100	1,950	600	-	
9	-	Mast Elemento di torre Tower element Elément de mât Turmstück		Standard	11,800	2,300	2,300	6180	-
	-			Booster	11,800	2,300	2,300	6280	-
	-			Super Booster	11,800	2,300	2,300	6300	-
10	1	Tronchetto di fondazione Expandable foundation element Elément a sceller Fundamentanker		Standard	1,820	2,400	2,400	1370	-
				Booster / Super Booster	1,820	2,400	2,400	1500	-
11	1	Canşın Elemento di spinta Connection frame Turmbasiselement		1,500	2,400	2,400	1200	-	
12	1	Teleskop Gabbia di motaggio Climbing cage Hydraulikbühne		7,900	5,500	4,150	7200	-	
13	4	Şase payanda kolu Puntoni di base Obliqual legs Basisdruckstäben		3,770	0,230	0,260	340	1360	
	1	Şase - uzun kol Trave principale della crociera di base Base main beam Hauptträger für Kreuzgelenk		8,900	0,720	0,760	1650	-	
	2	Şase - kısa kol Semitrave della crociera di base Half base beam Halbträger für Kreuzgelenk		4,350	0,600	0,760	750	1500	
	1	Şase mastı Elemento di base monolitico Base element Elément de base		3,000	2,300	2,300	2000	-	
14	2	Yürüyüş takımı - motorlu Bilancino di traslazione motorizzato Driven bogie Fahrschemel mit Motorantrieb		1,160	0,590	0,503	680	1360	
	2	Yürüyüş takımı Bilancino di traslazione folle Driven bogie Fahrschemel		1,160	0,250	0,503	455	960	
15	18	Şase taşı Blocco di zavorra Base ballast block Lest de base		(Z 323)	4,200	0,320	1,400	3230	58140
	2	Grundballastblöcken		(Z 624)	5,200	0,400	1,400	6240	12480
16	1	Kuyruk taşı Blocchi di contrappeso Counterweight block Contre-poids		(V 180)	1,800	0,200	2,400	1800	-
	2	Gegengewichtsblöcke		(V 235)	1,800	0,200	3,290	2350	4700
	8			(V 352)	1,800	0,300	3,290	3520	28160

2,10HC-45  
YÜKSELTİLEBİLİR  
A SOPRALZO IDRAULICO  
EXTERNAL CLIMBING  
TELESCOPABLE  
KLETTERKRANE

7

Farklı Dizilimler Mümkündür  
Altre Configurazioni Disponibili  
Other Configuration Available  
Autres configurations Disponibles  
Andere Konfigurationen Verfügbar



# BİLGİ VE TALEPLERİNİZ İÇİN

**FNS Makina Yapı ve İnşaat San. ve Tic. Ltd. Şti.**

Oruçreis mah. Tekstilkent Cad. Tekstilkent Sitesi A11 Blok

No:209 Esenler / İstanbul

**İletişim** +90 (212) 438 47 00

**Cep** +90 531 524 50 20

**E-mail** [info@fnsmakina.com.tr](mailto:info@fnsmakina.com.tr)



Özellikler ve teknik veriler katalogdakinden farklılık gösterebilir.

Dati illustrativi non impegnativi con riserva di modifica senza preavviso

Specifications and data not binding subject to modification without notice

Angaben und Beschreib ungunverbindlich andreungen vorbehalten ohne weitere mitteilung

Données techniques seulement indicatives modifications réservées sans préavis.